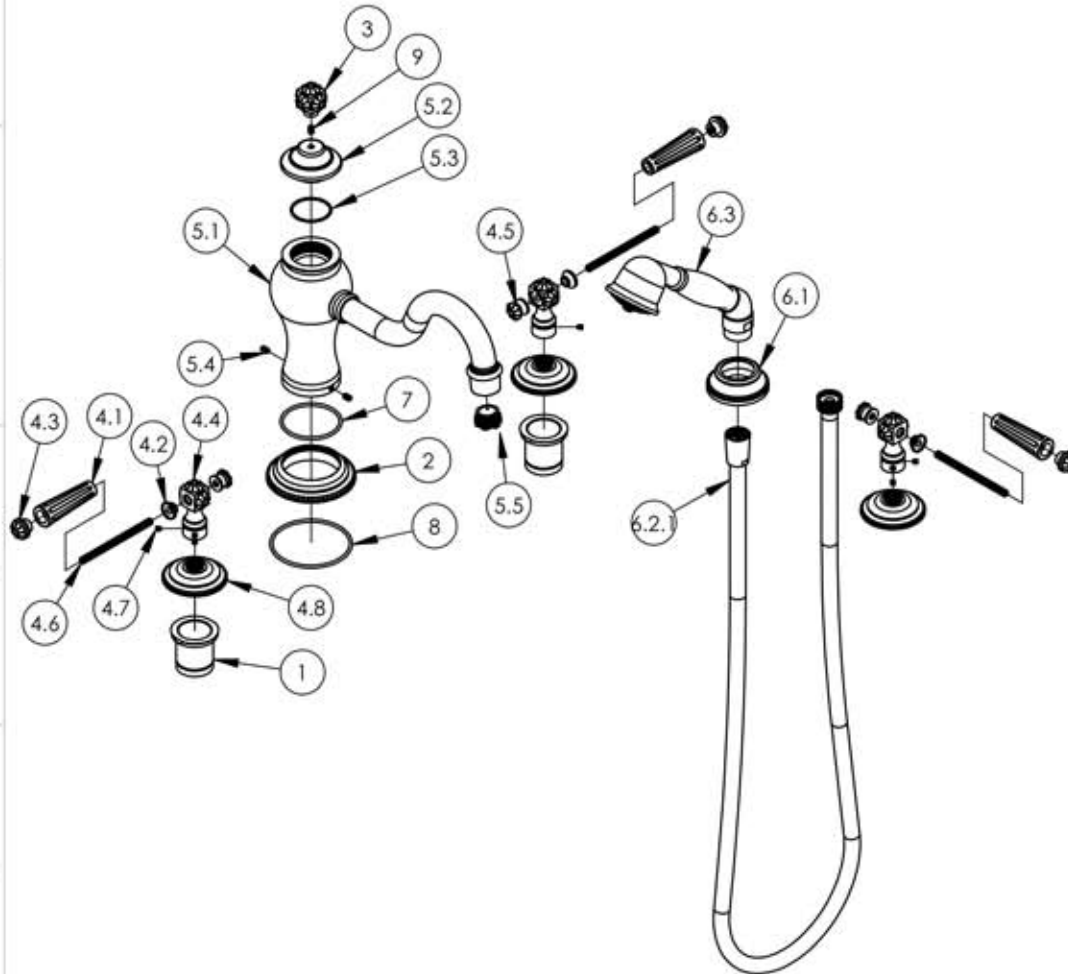


A

B

C

D



ITEM NO.	PART NUMBER	DESCRIPTION	QTY.
1	11077	SLEEVE MOUNT, DECK (ROMAN) TUB	2
2	11310/00	ESCUTCHEON, DECK TUB, BEADED	1
3	2-115/00	SUB-ASSY. FINIAL POP-UP, MARVELLE SERIES	1
4	3-030/00	HANDLE LEVER, MARVELLE SEIRES	3
4.1	10541/00	LEVER HANDLE INSERT, MARVELLE	1
4.2	11102/00	BASE HANDLE FOR LEVER HEX TRADITIONAL 500 SERIES	1
4.3	2-111/00	SUB-ASSY. END CAP FINIAL, MARVELLE	1
4.4	2-113/00	SUB-ASSY. LEVER TRASITION FINIAL, MARVELLE	1
4.5	2-112/00	SUB-ASSY. FINIAL EXTENSION BACK LEVER	1
4.6	10543	THREADED ROD, 1/4"-20 X 3"-5/8 L	1
4.7	92008	SET SCREW, CUP POINT 8-32	2
4.8	10540/00	ESCUTCHEON, MARVELLE SERIES	1
5	3-397	SUB ASSY. DECK TUB SPOUT	1
5.1	2-155	SUB ASSY. BRAZED BODY AND SPOUT, COURONNE/MARVELLE SERIES	1
5.2	11305/00	SPOUT CAP, DECK TUB	1
5.3	90028	O-RING, 1-3/8"ID X 1/16"THK, AS-568-028	1
5.4	92060	SET SCREW, 10-24 5/16"L	2
5.5	P05051	AERATOR, CACHE COINED SLOT M24X1.0 FULL FLOW	1
6	3-402/00	ASSY. HAND SHOWER DECK TUB, BEADED	1
6.1	11311/00	EXCUTCHEON BEADED, HAND SHOWER, MARVELLE	1
6.2	3-049/00	ASSY. HOSE KIT, HANDSHOWER	1
6.2.1	10616/00	HOSE SHELL, 1/2" NPSM x 60" LONG	1
6.2.2	10638	CLEAR HOSE	1
6.2.3	92245	HOSE INSERT	2
6.2.4	90524	GASKET, FLAT WASHER	2
6.3	P15007/00	K6560 HANDSHOWER HEAD	1
7	90137	O-RING, 2-1/16"ID X 3/32"THK., AS-568-137	1
8	90149	O-RING, 2-13/16" ID X 3/32" THK, AS-568-149	1
9	92060	SET SCREW, 10-24 5/16"L	1

ALL	A	-ASSY. UPDATED WITH SUB ASSY'S	12/4/2015	GRE
ZONE	REV.	DESCRIPTION	DATE	APPROVED
REVISIONS				

1261 LOGAN AVENUE
COSTA MESA, CALIFORNIA 92626
PHONE: 714.361.4800
FAX: 714.617.3120

PHYLIRICH®

Defining Luxury Since 1959

PROPRIETARY AND CONFIDENTIAL
THE INFORMATION CONTAINED IN THIS DRAWING IS THE SOLE PROPERTY OF RISS MANUFACTURING. ANY REPRODUCTION IN PART OR AS A WHOLE WITHOUT THE WRITTEN PERMISSION OF RISS MANUFACTURING IS PROHIBITED.

NEXT ASSY	USED ON	FRACTIONS ±1/64"	DECIMALS X.X: ±.1 X.XX: ±.01 X.XXX: ±.005	ANGULAR ±.5°
APPLICATION				
MATERIAL				
FINISH				
DO NOT SCALE DRAWING				

DECK TUB W/ HAND SHOWER, LEVER
HANDLES, MARVELLE SERIES

SIZE ASM/PRT NO. REV
A 162-49/00 A

SCALE: 1:7 WEIGHT: lbs. SHEET 1 OF 2

5

4

3

2

1